

How to: mount your drawer unit to your workbench

Which type of suspension brackets do you need to mount your drawer unit to your workbench?
This guide applies to all of our drawer units, both storage and tool drawer units.

WORKBENCH LD 300 (600 mm)

Mounted with suspension brackets.
Use suspension brackets: **4-475-0**

WORKBENCH LD 300 (800 mm)

Mounted with suspension brackets.
Use suspension brackets: **4-476-0**

WORKBENCH HD 500

Mounted directly to the table top.
Use attached wood screw.

WORKBENCH W200

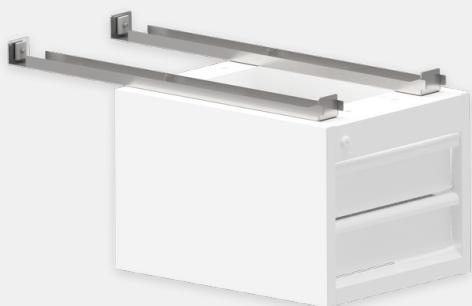
Not adapted for mounting of drawer unit.

WORKBENCH W300 (800 mm)

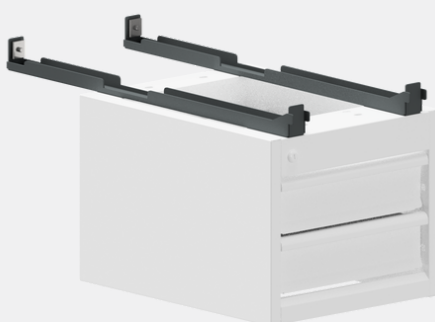
Mounted with suspension brackets.
Use suspension brackets: **9-21013-21-136**

WORKBENCH W400/W600

Mounted directly to the table frame.
Use suspension kit: **11-500-100-0**



4-475-0 / 4-476-0



9-21013-21-136



11-500-100-0