

The Workstation Guide

-Which workstation best suits your need?

Min. Height: 680 mm
Max. Height: 1180 mm
Height adjustment range:
500 mm

What Drawers fit? N/A

Accessories:
Perforated upright
screwed into worktop,
height 500 mm

Size Frame:
Width 1050-1600 mm

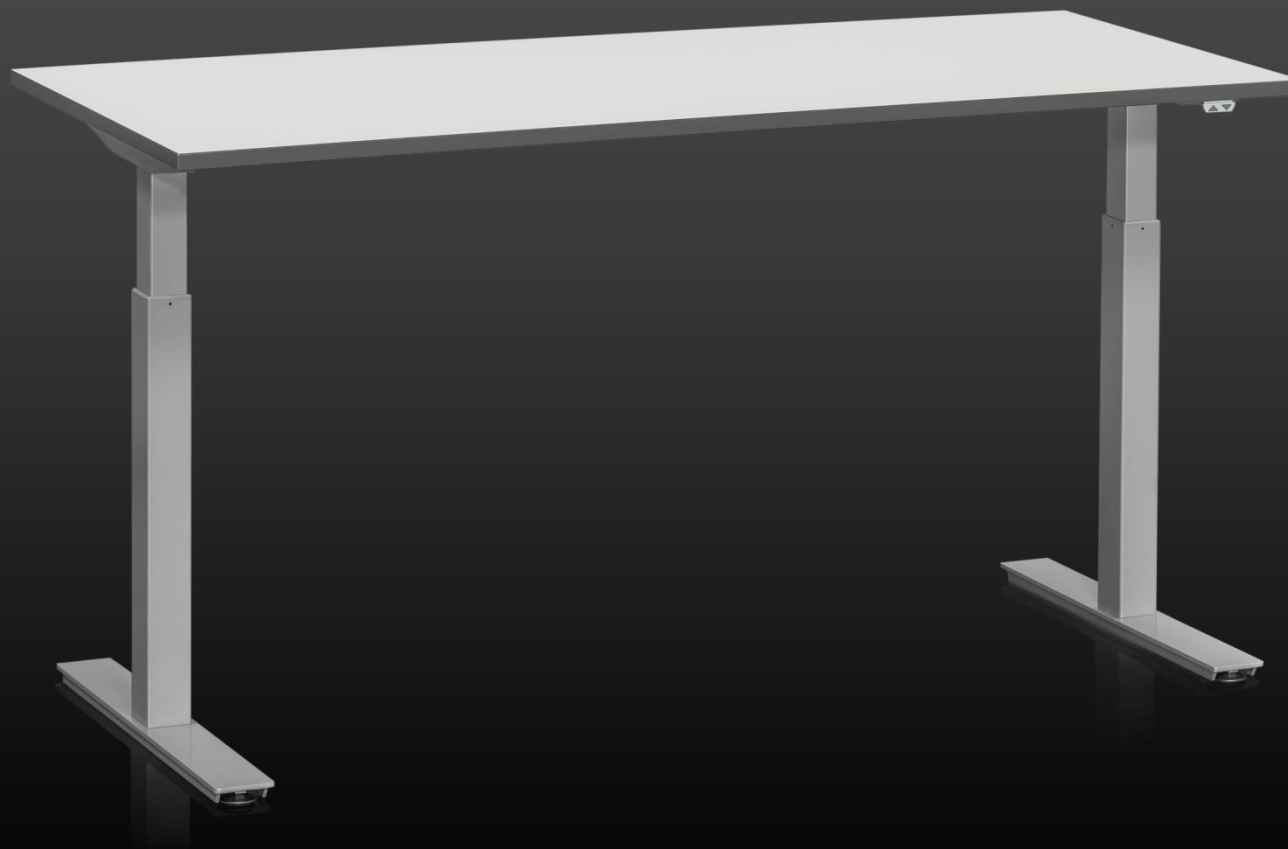
Recommended table top:
Width = 1200/1600 mm,

Depth 800 mm

Parallel connection: N/A

MW 90

Our most handy MOTORIZED workstation for easier assembly and packing!



Max. Load 150 KG

Min. Height: 675 mm
Max. Height: 1125 mm

Height adjustment range
450 mm

Other height,
customized:
Max H 575 Min H 925mm

What Drawers fit?
Storage Drawer (LD) with
suspension bracket.

Supplementary
Accessories? Yes

Attachment: Rear frame
and accessories is
purchased separately.

Sizes:
Deep 600/800
Width 1200/1600/2000

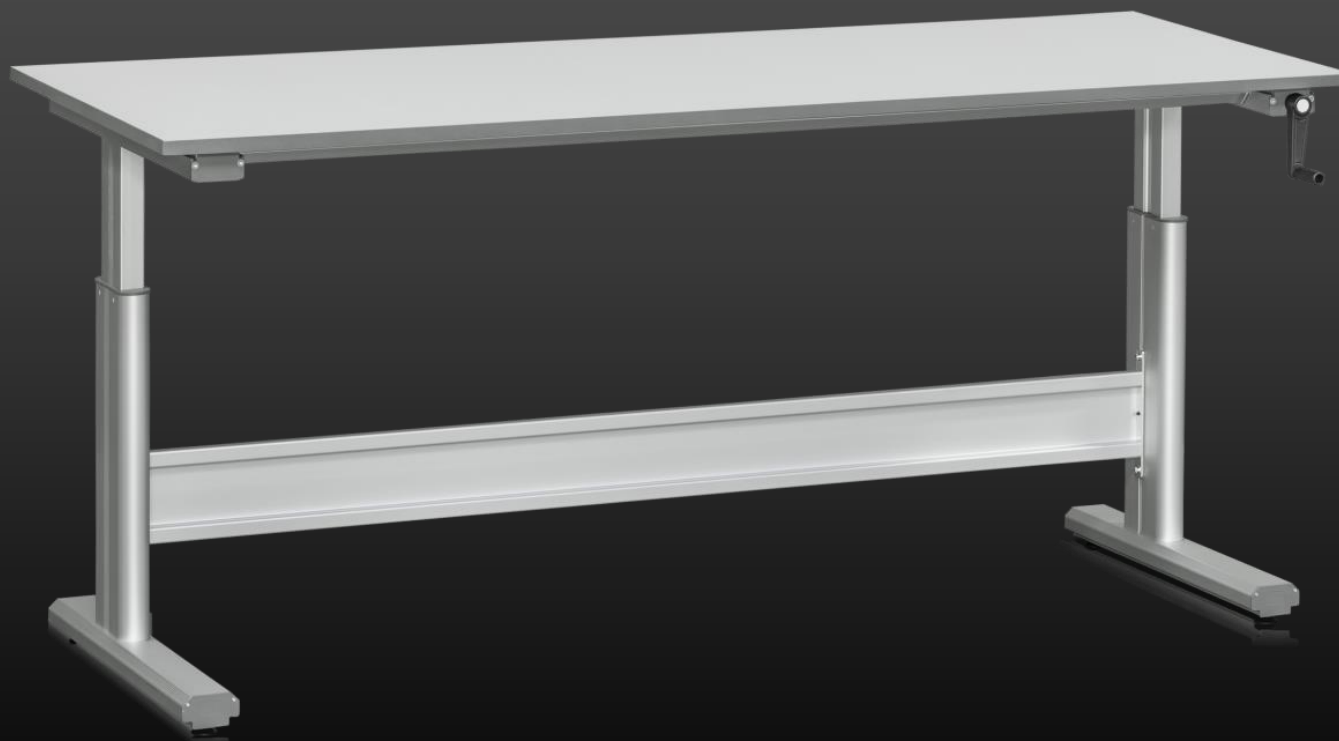
Customized length
possible (shorter).

Parallel connection? N/A

Other:
Shelf under bench 300
mm is available as an
accessory.
L = 600/1200/1600

CW 150

Our lightweight and quality-proof aluminum table with crank function!



Min. Height: 675 mm
Max. Height: 1125 mm
Height adjustment range
450 mm

Other height,
customized:
Max H 575 Min H 925mm

What Drawers fit?
Storage Drawer (LD) with
suspension bracket.

Sizes: Deep 600/800
Width 1200/1600/2000

Customized length
possible (shorter).

Parallel connection? Yes,
up to 8 tables

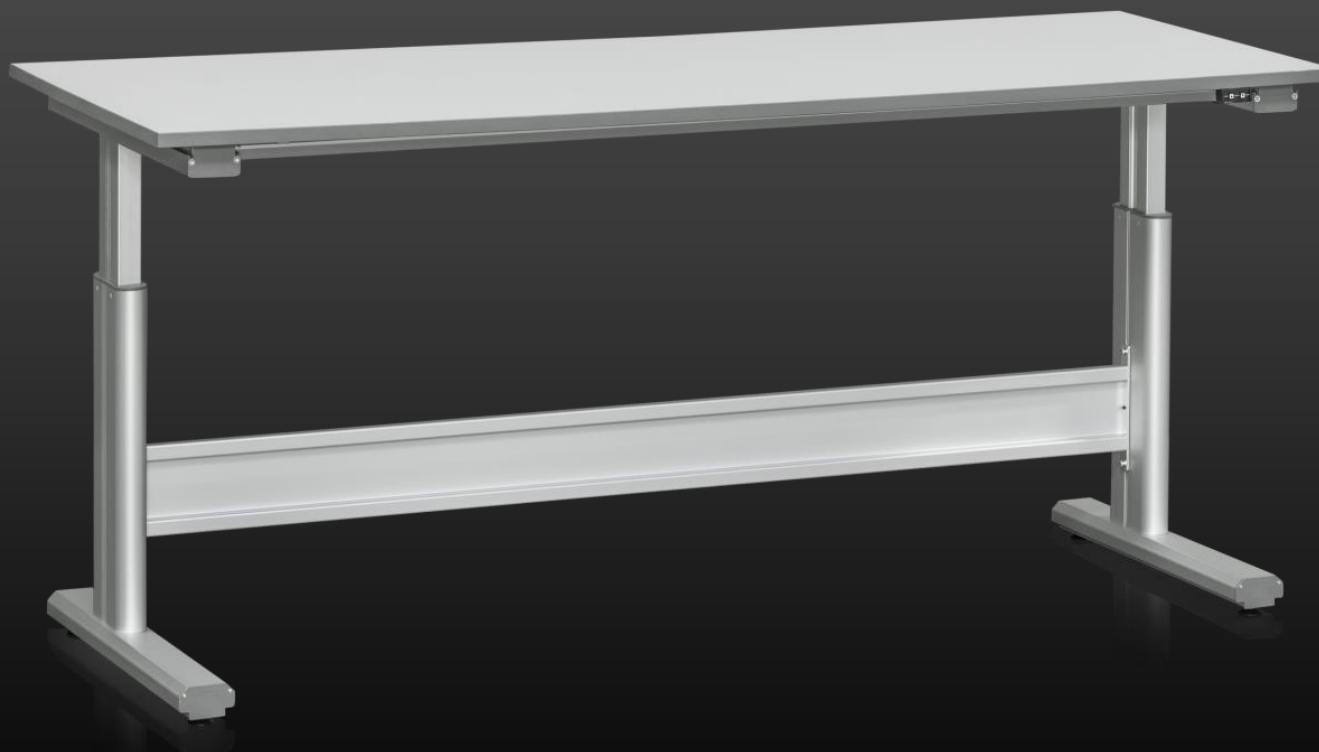
Speed: 38 mm/s

Other:
Shelf under bench 300
mm is available as an
accessory.
L = 600/1200/1600

Desktop control with
memory is available as
an accessory.

MW 200

Our lightweight and quality-proof MOTORIZED workstation!



Min. Height: 685 mm
Max. Height: 1185 mm
Height adjustment range
500 mm

What Drawers fit?
Storage Drawer (LD) with
suspension bracket.

Supplementary
Accessories? Yes

Sizes:
Width 1200/1600/2000
mm
Deep 600/800 mm

Available in shorter
length and other depths.

Parallel connection:
Yes up to 8 tables

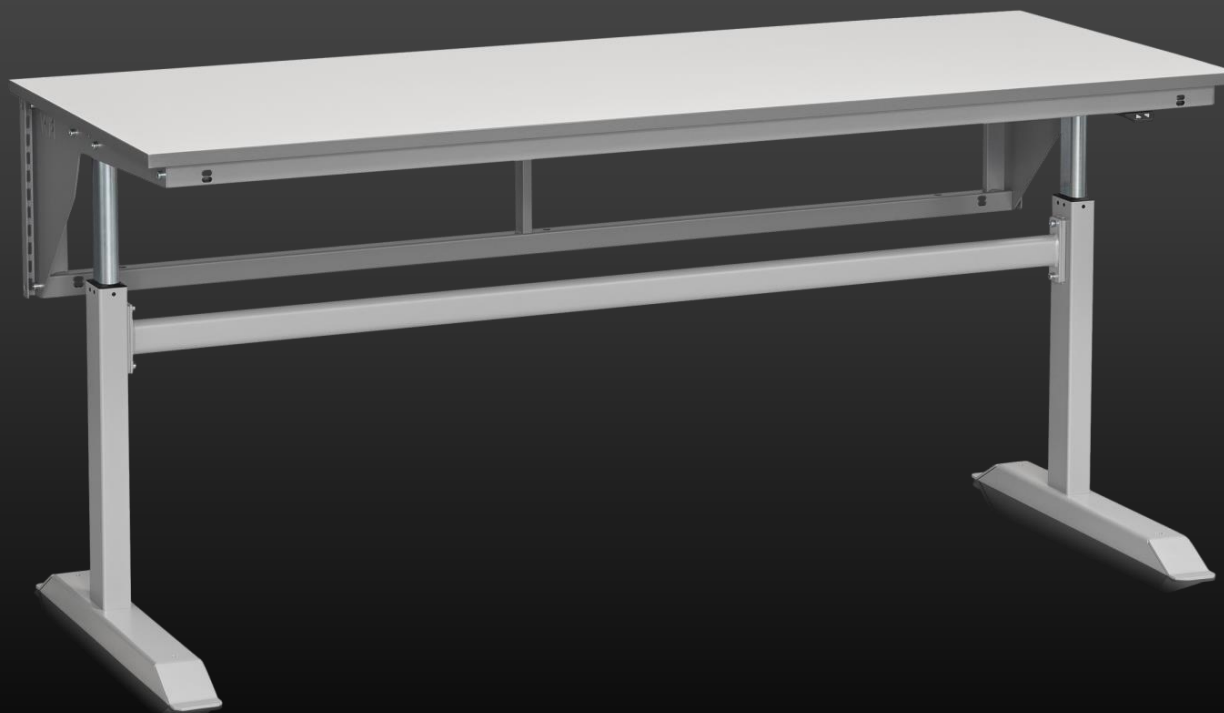
Speed:

Other:
Possibility to hang
accessories under the
table.
Ex shelves

Desktop control with
memory is available as
an accessory

MW 250

Our BESTSELLING all-round workstation for all uses!
The rear frame is always included in the table!



Min. Height: 685 mm
Max. Height: 1135 mm
Height adjustment range
450 mm

What Drawers fit?
Storage Drawer (LD).

Supplementary
Accessories? Yes

Sizes? Deep 600/800 mm
Width 1200/1600/2000
mm

Parallel connection? Yes,
up to 6 tables

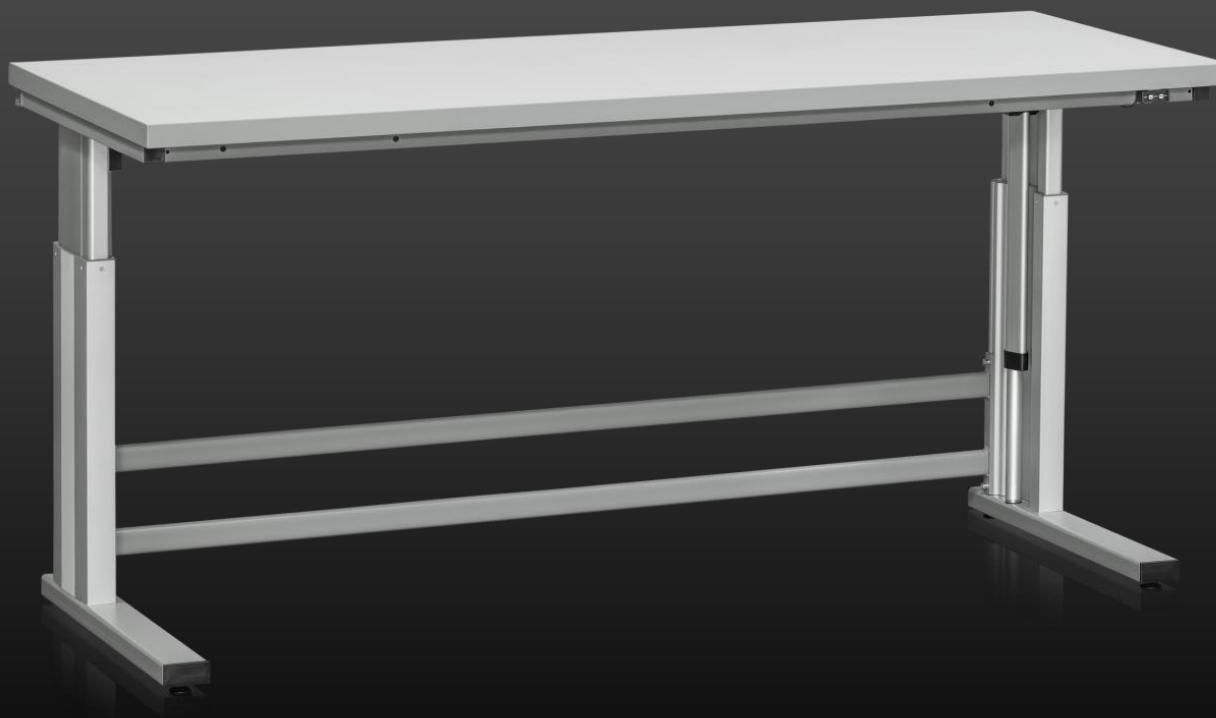
Speed? 20 mm/S

Other:
Possibility of under
bench shelf that follows
the adjustment of the
table.

Desktop control with
memory is available as
an accessory.

MW 375

Our heavy duty PREMIUM workstation!



Min. Height: 650 mm
Max. Height: 1100 mm
Height adjustment range
450 mm

What Drawers fit?
Storage Drawer (LD) with
suspension bracket.

Supplementary
Accessories? Yes

Sizes? Depth 800 mm
Width 1600/2000 mm

Parallel connection?
Yes, up to 6 tables.

Speed? 14 mm/S

Other:
Desktop control with
memory is available as
an accessory.

MW 500

Our toughest standard workstation!





WORKPLACES FOR INDUSTRIES

