

WFI Yelp

TABLE GUIDE





OUR IDEA

We work to help others work smarter

WFI develops and sells workplace solutions that enhance efficiency and drive business success. By offering a comprehensive range of workstation solutions, with a focus on industrial and warehouse benches, we help companies streamline workflows, increase packing capacity, and optimize goods handling. Simply put – work smarter.

Our headquarters and warehouse, with over 1,000 products in stock, are located in Gnosjö, Sweden. This is also where all product development takes place and where most of our products are manufactured. Our products are sold through resellers, located all over the world.



WFI YELP

Why table guide?

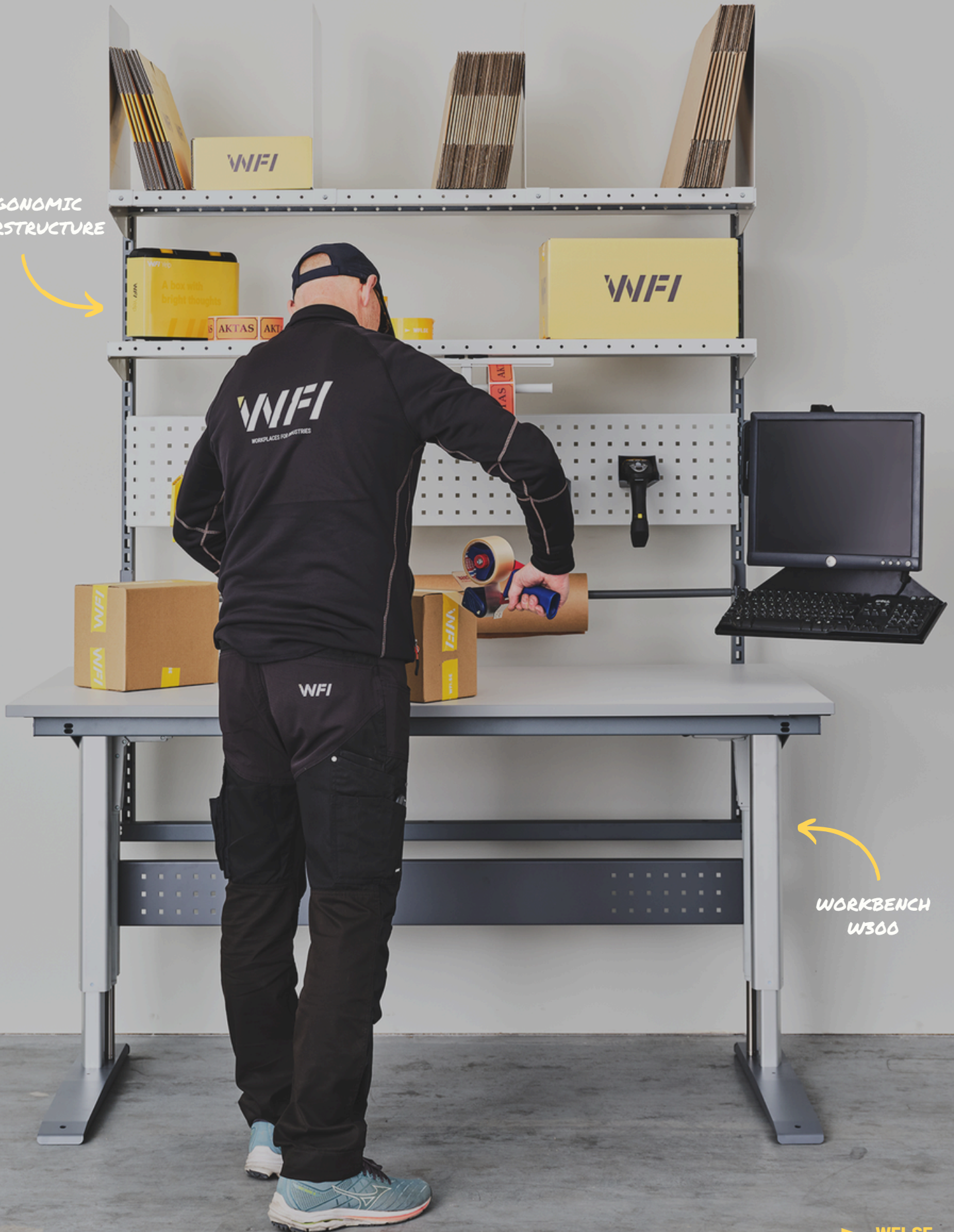
We want to make it easier for others to work smarter. Therefore, we have produced an overview of our manual and motorized workbenches, for you to be able to choose the right table based on your needs. Simply a table guide! Smart right?

Follow the guide like this!

The guide takes you through all our tables in order of size – from manual to motorized and from the most flexible to the heaviest. In the top corner, you can see what load capacity the table has, followed by a specification of dimensions, materials, and standard designs. As well as what can be mounted above and below the table. At the end, we have also gathered a selection of our more specialized industrial tables. All motorized workbenches have a QR code with a direct link to an assembly video!



ERGONOMIC
SUPERSTRUCTURE



WORKBENCH
W300



1-802-136 etc.

Workbench LD 300

Manual workbench for lighter assembly work.



Specification

HEIGHT: 730-980 mm

HEIGHT ADJUSTMENT RANGE: 250 mm

STAND MATERIAL: Steel

STAND: Manually adjustable

TABLE TOP: Laminate 24 mm

STANDARD DESIGNS: 1200x600 / 1200x800
/ 1600x600 / 1600x800 / 2000x600 / 2000x800

LOAD CAPACITY: 300 kg distributed weight

Accessories

MOUNTING OF SUPERSTRUCTURE: Yes

MOUNTING OF DRAWER UNIT: Yes

1-645-136 etc.

Workbench HD 500

Manual workbench with stable, heavy h-frame steel legs.



Specification

HEIGHT: 745-1015 mm

HEIGHT ADJUSTMENT RANGE: 270 mm

STAND MATERIAL: Steel

STAND: Manually adjustable

TABLE TOP: Laminate/vinyl/steel/oak 40 mm

STANDARD DESIGNS: 1200x800 / 1600x600
/ 1600x800 / 2000x600 / 2000x800

LOAD CAPACITY: 500 kg distributed weight

Accessories

MOUNTING OF SUPERSTRUCTURE: Yes

MOUNTING OF DRAWER UNIT: Yes



9-739-136

PACKING TABLE S

Accessories:

- 2 perforated uprights
- 2 shelves
- 4 dividers



9-735-136

PACKING TABLE M

Accessories:

- 4 perforated uprights
- 2 shelves
- 4 dividers
- Paper-tearing device



9-731-136

PACKING TABLE L

Accessories:

- 2 perforated uprights
- 2 shelves
- 4 dividers
- Roller holder
- Sliding knife unit



*MORE COMPLETE VARIANTS
AVAILABLE ON OUR WEBSITE!*

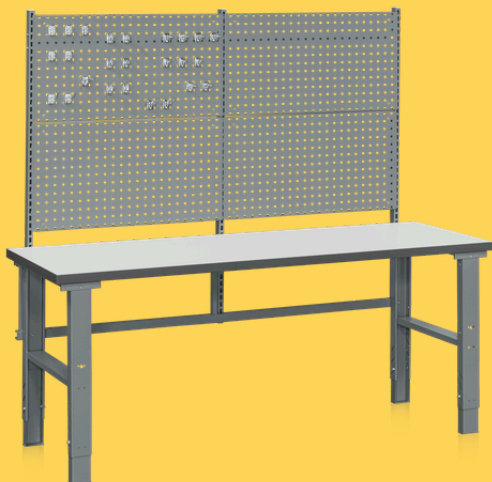


1-925-136

COMPLETE 1

Accessories:

- 3 perforated uprights
- 1 frame for uprights
- 2 perforated tool panels
- 2 shelves
- 2 suspension rails
- 12 plastic bins



1-926-136

COMPLETE 2

Accessories:

- 3 perforated uprights
- 1 frame for uprights
- 4 perforated tool panels



1-929-136

COMPLETE 4

Accessories:

- 3 perforated uprights
- 1 frame for uprights
- 2 perforated tool panels
- 2 shelves
- 2 suspension rails
- 12 plastic bins
- 2 fixed support arms for c-rail
- C-rail
- Workplace lighting



*MORE COMPLETE VARIANTS
AVAILABLE ON OUR WEBSITE!*



1-861-0 etc.

Workbench W90

Our most flexible motorized workbench for work such as lighter assembling and packing.



Specification

HEIGHT: 605-1265 mm**HEIGHT ADJUSTMENT RANGE:** 660 mm**STAND:** Steel**TABLE TOP:** Laminate or vinyl 24 mm**STANDARD DESIGNS:** 1200x800 / 1600x800**PARALLEL OPERATION:** No**LIFTING SPEED:** 40 mm/s unloaded**MOTORS:** Powered by 230 V/50Hz**LOAD CAPACITY:** 90 kg distributed weight

Accessories

MOUNTING OF SUPERSTRUCTURE: No**MOUNTING OF DRAWER UNIT:** No

11-100-101 etc.

Workbench W200

Motorized workbench made of lacquered steel. Intended for lighter work such as assembling and packing.



Specification

HEIGHT: 680-1180 mm**HEIGHT ADJUSTMENT RANGE:** 500 mm**STAND:** Steel**TABLE TOP:** Laminate vinyl or 24 mm**STANDARD DESIGNS:** 1200x800 / 1600x800 / 1800x800**PARALLEL OPERATION:** Yes**LIFTING SPEED:** 33 mm/s unloaded**MOTORS:** Powered by 230 V/50Hz**LOAD CAPACITY:** 200 kg distributed weight

Accessories

MOUNTING OF SUPERSTRUCTURE: Yes**MOUNTING OF DRAWER UNIT:** No

SCAN THE QR CODE
FOR ASSEMBLY VIDEO!



11-100-111

COMPLETE A

Accessories:

- 2 perforated uprights
- 1 shelf
- 5 dividers



11-100-112

COMPLETE B

Accessories:

- 3 perforated uprights
- 2 perforated tool panels
- 2 shelves



11-100-113

COMPLETE C

Accessories:

- 3 perforated uprights
- 1 perforated tool panel
- 5 suspension rails



*MORE COMPLETE VARIANTS
AVAILABLE ON OUR WEBSITE!*



280-16080-01 etc.

Workbench W280

Motorized workbench with four columns, providing extra stability for tasks requiring a strong and steady work surface.



Specification

HEIGHT: 610-1270 mm

HEIGHT ADJUSTMENT RANGE: 660 mm

STAND: Steel

TABLE TOP: Laminate 24 mm

STANDARD DESIGNS: 1200x800 / 1600x800 / 2000x800

PARALLEL OPERATION: Yes

LIFTING SPEED: 38 mm/s unloaded

MOTORS: Powered by 230 V/50Hz

LOAD CAPACITY: 280 kg distributed weight

Accessories

MOUNTING OF SUPERSTRUCTURE: Yes

MOUNTING OF DRAWER UNIT: Yes

11-280-110

Workbench W280 Complete A

Motorized workbench W280, complete with 3 perforated uprights, 2 tool panels, 2 suspension rails, and 2 shelves.



Specification

HEIGHT: 610-1270 mm

HEIGHT ADJUSTMENT RANGE: 660 mm

STAND: Steel

TABLE TOP: Laminate 24 mm

STANDARD DESIGNS: 1200x800 / 1600x800 / 2000x800

PARALLEL OPERATION: Yes

LIFTING SPEED: 38 mm/s unloaded

MOTORS: Powered by 230 V/50Hz

LOAD CAPACITY: 280 kg distributed weight

Accessories

MOUNTING OF SUPERSTRUCTURE: Yes

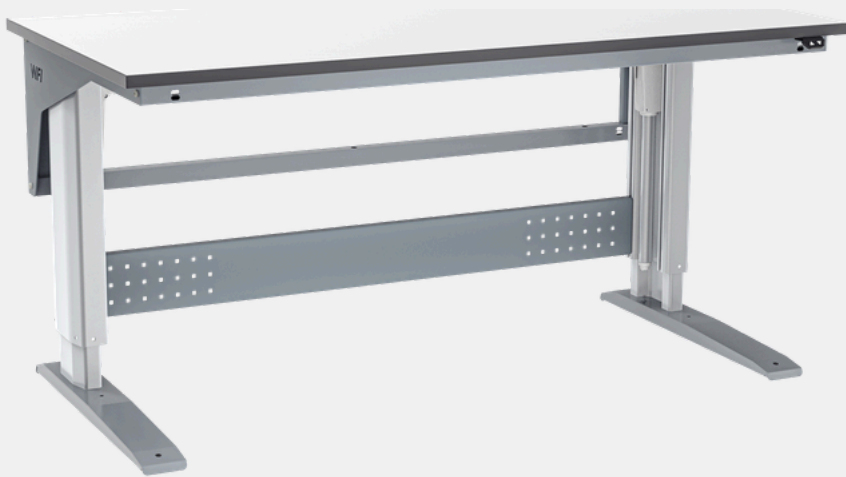
MOUNTING OF DRAWER UNIT: Yes



300-12060-00 etc.

Workbench W300

Motorized workbench suitable for industrial and logistics work, really stable and resistant to both corrosion and wear.



SCAN THE QR CODE
FOR ASSEMBLY VIDEO!



Specification

HEIGHT: 700-1150 mm**HEIGHT ADJUSTMENT RANGE:** 450 mm**STAND:** Steel**TABLE TOP:** Laminate 24 mm**STANDARD DESIGNS:** 1200x600 / 1200x800 /
1600x600 / 1600x800 / 1800x600 / 1800x800
/ 2000x600 / 2000x800**PARALLEL OPERATION:** Yes**LIFTING SPEED:** 15 mm/s unloaded**MOTORS:** Powered by 230 V/50Hz**LOAD CAPACITY:** 300 kg distributed weight

Accessories

MOUNTING OF SUPERSTRUCTURE: Yes**MOUNTING OF DRAWER UNIT:** Yes

400-12060-00 etc.

Workbench W400

Motorized workbench suitable for industrial and logistics work, really stable and resistant to both corrosion and wear.



Specification

HEIGHT: 700-1150 mm**HEIGHT ADJUSTMENT RANGE:** 450 mm**STAND:** Steel**TABLE TOP:** Laminate 24 mm**STANDARD DESIGNS:** 1200x600 / 1200x800 /
1600x600 / 1600x800 / 1800x600 / 1800x800
/ 2000x600 / 2000x800**PARALLEL OPERATION:** Yes**LIFTING SPEED:** 10 mm/s unloaded**MOTORS:** Powered by 230 V/50Hz**LOAD CAPACITY:** 400 kg distributed weight

Accessories

MOUNTING OF SUPERSTRUCTURE: Yes**MOUNTING OF DRAWER UNIT:** Yes

SCAN THE QR CODE
FOR ASSEMBLY VIDEO!





300-16080-10

COMPLETE 100

Accessories:

- 2 perforated uprights
- 2 shelves
- 8 dividers

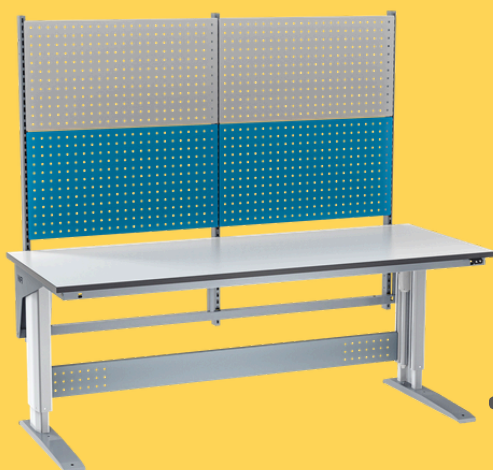


300-16080-13

COMPLETE 115

Accessories:

- 3 perforated uprights
- 2 suspension rails
- 2 perforated tool panels
- Superstructure kit for lighting
- Details for c-profile



300-20080-10

COMPLETE 116

Accessories:

- 3 perforated uprights
- 4 perforated tool panels



*MORE COMPLETE VARIANTS
AVAILABLE ON OUR WEBSITE!*



400-20080-13

COMPLETE 113

Accessories:

- 2 perforated uprights
- 2 shelves
- 8 dividers



400-20080-12

COMPLETE 112

Accessories:

- 3 perforated uprights
- 2 perforated tool panels
- 2 suspension rails
- 2 shelves



400-20080-17

COMPLETE 117

Accessories:

- 3 perforated uprights
- 2 perforated tool panels
- 2 suspension rails
- 2 shelves
- Energy strip
- Storage drawer
- Superstructure kit with c-profile



*MORE COMPLETE VARIANTS
AVAILABLE ON OUR WEBSITE!*



WORKBENCH
W400

ADJUSTABLE
LOWER SHELF



11-406-003

Workbench W400 Angle

Motorized workbench in angle intended for work such as assembling or packing. The workbench has three legs which are linked together and easily controlled with one simple table control.



Specification

HEIGHT: 700-1150 mm

HEIGHT ADJUSTMENT RANGE: 450 mm

STAND: Steel

TABLE TOP: Laminate 24 mm

STANDARD DESIGNS: 2000x2000

PARALLEL OPERATION: Yes

LIFTING SPEED: 10 mm/s unloaded

MOTORS: Powered by 230 V/50Hz

LOAD CAPACITY: 400 kg distributed weight

Accessories

MOUNTING OF SUPERSTRUCTURE: Yes, one side

MOUNTING OF DRAWER UNIT: Yes

600-12080-00 etc.

Workbench W600

Motorized workbench intended for heavier workshop work, really stable and resistant to both corrosion and wear.



Specification

HEIGHT: 660-1060 mm

HEIGHT ADJUSTMENT RANGE: 400 mm

STAND: Steel

TABLE TOP: Laminate 24 mm

STANDARD DESIGNS: 1200x800 / 1600x800 / 2000x800

PARALLEL OPERATION: Yes

LIFTING SPEED: 6,5 mm/s unloaded

MOTORS: Powered by 230 V/50Hz

LOAD CAPACITY: 600 kg distributed weight

Accessories

MOUNTING OF SUPERSTRUCTURE: Yes

MOUNTING OF DRAWER UNIT: Yes



WFI YELP

Complete with accessories

For you to be able to design a workbench for your needs, we have a wide range of accessories for all possible flows and environments. Everything from shelves, suspension rails, and perforated panels to drawers, plastic bins, lighting, and flexible arms. Explore our range at wfi.se/en or scan the QR code for an example of how you can build your complete workbench!



ASSEMBLY VIDEO OF
SUPERSTRUCTURE AND ACCESSORIES



▶ WFI.SE



Industrial workbenches

In our range of workbenches, you will also find a selection of specialized industrial tables designed for tasks such as welding and assembling. We offer both manual and motorized variants, and the motorized ones are built on the same base as our standard motorized workbenches. A construction that allows mounting of superstructure above the table top – which means that you can add our standard accessories to your extraction table, welding table, or tilting table as well.



11-404-001-H etc.

Tilting Table LD300

Manual tilting table with electrically tiltable table top.
Can be manually height adjusted 730-980 mm.



Specification

HEIGHT: 730-980 mm
HEIGHT ADJUSTMENT RANGE: 250 mm
STAND: Steel
TABLE TOP: Laminate 24 mm
STANDARD DESIGNS: 1400x800 / 1800x800 / 2200x800
LOAD CAPACITY: 160 kg distributed weight
ANGLE: 70 °

Accessories:

MOUNTING OF SUPERSTRUCTURE: Yes
MOUNTING OF DRAWER UNIT: No

11-405-001-D etc.

Tilting Table W400

Motorized tilting table for assembly work,
really stable and resistant to both corrosion and wear.



CE MARKED*

Specification

HEIGHT: 700-1150 mm
HEIGHT ADJUSTMENT RANGE: 450 mm
STAND: Steel
TABLE TOP: Laminate 24 mm
STANDARD DESIGNS: 1400x800 / 1800x800 / 2200x800
PARALLEL OPERATION: Yes
LIFTING SPEED: 10 mm/s unloaded
MOTORS: Powered by 230 V/50Hz
LOAD CAPACITY: 400 kg distributed weight
ANGLE: 68 °

Accessories

MOUNTING OF SUPERSTRUCTURE: Yes
MOUNTING OF DRAWER UNIT: No

*CE marked and manufactured in accordance with the current directive 2006/42/EG with special references to the directives Annex 1 regarding essential health and safety requirements in connection with construction of machines.



1-438 etc.

Welding Table Manual

Manual welding table for industries and workshops. A perfect option when in need of a manual and sturdy welding table with a steel plate.



Specification

HEIGHT: 710-990 mm

HEIGHT ADJUSTMENT RANGE: 280 mm

STAND: Steel

STANDARD DESIGNS: 1600x800 / 2000x800

LOAD CAPACITY: 400 kg distributed weight

Accessories

MOUNTING OF SUPERSTRUCTURE: Yes

MOUNTING OF DRAWER UNIT: No

1-420-0 etc.

Welding Table with Drip Plate

Manual and sturdy welding table with standing flat iron that is located in a steel pipe frame, suitable for both soldering and welding.



Specification

HEIGHT: 750-1020 mm

HEIGHT ADJUSTMENT RANGE: 270 mm

STAND: Steel

STANDARD DESIGNS: 1200x800 / 1600x800

LOAD CAPACITY: 500 kg distributed weight

Accessories

MOUNTING OF SUPERSTRUCTURE: No

MOUNTING OF DRAWER UNIT: No



1-434-0 etc.

Welding Table Motorized

Motorized welding table for industries and workshops, equipped with a 12 mm directional steel plate with 28 mm holes for clamps.



Specification

HEIGHT: 680-1080 mm

HEIGHT ADJUSTMENT RANGE: 400 mm

STAND: Steel

STANDARD DESIGNS: 1200x800 / 1600x800 / 2000x800

LIFTING SPEED: 6,5 mm/s unloaded

LOAD CAPACITY: 500 kg distributed weight

Accessories

MOUNTING OF SUPERSTRUCTURE: Yes

MOUNTING OF DRAWER UNIT: No

1-435-0 etc.

Extraction Table W400

Motorized extraction table intended for industrial work where it occurs smoke or dust, such as grinding of different materials. Equipped with a durable rubber mat and edging for gentle handling, as well as a bottom tray.



Specification

HEIGHT: 700-1150 mm

HEIGHT ADJUSTMENT RANGE: 450 mm

STAND: Steel

STANDARD DESIGNS: 1200x800 / 1600x800 / 2000x800

LIFTING SPEED: 10 mm/s unloaded

LOAD CAPACITY: 400 kg distributed weight

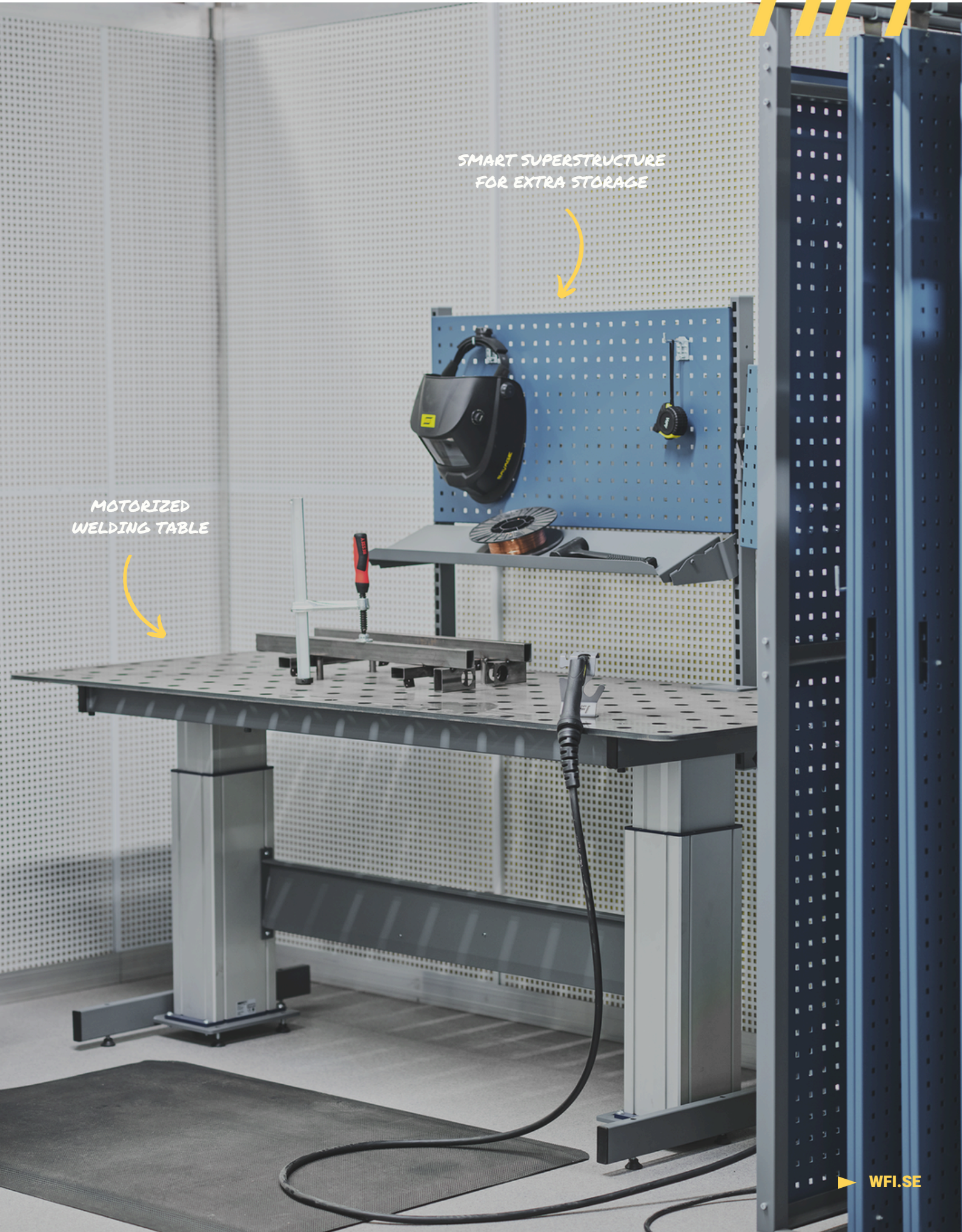
Accessories

MOUNTING OF SUPERSTRUCTURE: Yes

MOUNTING OF DRAWER UNIT: No

SMART SUPERSTRUCTURE
FOR EXTRA STORAGE

MOTORIZED
WELDING TABLE





THE YELPER

Create your unique workbench in The Yelper!

In our configurator, The Yelper, you can build a unique workplace solution directly online. Start by choosing type of workbench, function, and load capacity and then, add accessories for your workflow. Everything in a 3D view with a drag and drop function, price information, and the ability to send a quotation request. Existing customers see their specific prices when logged in.



Try to **build your unique workbench** by
scanning the QR code:





WFI Yelp

WFI AB
Lidängsvägen 5
335 32 Gnosjö, Sweden
+46 (0)370 37 13 00
info@wfiab.se

► **WFI.SE**